



Bisbee Mining & Historical Museum, *in association with the Smithsonian Institution*

Issue #78, Winter 2017

Newsletter

Who are these guys?

Meet your Museum Staff!

Last year saw some changes to our office and curatorial staffing and I thought it time to have some fun with our Newsletter and introduce (or re-introduce as the case may be) us!

As a quick introduction, there are three of us. As director, I (= Carrie) oft times am able to indulge myself in direction; our Office Manager, Brenda, does get to manage though she plays a dual role as the City's Visitor Center Office Manager as well; and our Curator of Education & Collections, Amanda, clearly "cares for" both our kids and collections as bespeaks the Latin etymology!

Let's start with Carrie.

Growing up, I spent many years learning about other cultures and people around the world, travelling with my family under the United Nations IAEA program. Bypassing traditional public school education, I learned so much (albeit not math or writing!) through home schooling (or at least my Mother's rather odd version of it); a stint at the University of the Andes in Bogota, Columbia, to take a Span-



Left to right: Amanda Hetro, Curator of Education & Collections; Carrie Gustavson, Director, & Brenda Morales, Office Manager

ish course when I was 11 and thoroughly unable to appreciate the opportunity; a few months here and there in the Foreign Diplomatic School in Teheran where I spent more time traveling in the Middle East, Europe, and Russia than in class; a brief time with some very scary nuns in a Catholic school in Mexico City; and undertaking the K-3 "teacher" position in lieu of my Junior & Senior years at the Department of Defense High School in Korea.

After returning to the United States, I received my graduate degrees in Near Eastern Studies from UCLA/University of California, Berkeley and the University of Toronto. For 20 years, I worked at, then directed, numerous archaeological excavations and research studies throughout the Middle East. Twenty-six years ago, I returned to the United States and completed my graduate degree in Museum Studies at Arizona State University and was hired by the Bisbee Council on the Arts & Humanities.

As is typical of our nation's small museums, my job descrip-

tion pretty much centers on advising the Board of Directors on policy, budget, and planning; fundraising; directing staff in the operation of the Museum; and developing educational, exhibi-

tion, and outreach programming. Even with this lovely “to do” list, as in all job descriptions there is the concluding directive... “and performs related work as required!” In light of this delightful catchphrase, I have gained skills as a competent historic plumbing adjuster, a knowledgeable sewer consultant and privy investigator, an unlicensed and unbonded electrician and roofer, and have become very skilled with pliers, a hammer, duct tape, and gum!

As your Director, the Museum has received state and national recognition for its award-winning interactive exhibitry and programming. Over the past 15 years the Museum has received the Arizona Governor’s Award for Arizona Preservation, Arizona Office of Tourism; the Award of Merit for Leadership in History from the American Association of State & Local History; and the Award for Community Contribution and Award of Excellence from the Museum Association of Arizona. The Museum was also nominated by our Congressional representatives to the Library of Congress Local Legacy program and for the Institute of Museum & Library Services’ 2017 National Award for Museum Service.

I love Bisbee and have truly been happy living here and building such wonderful friendships for the past 25 years! I also enjoy giving back to my community, having served on the Board of Directors of the Bisbee Unified School District, Copper Queen Hospital Board, and Chiricahua Community Health Centers to name a few. I have been a member of the Bisbee Rotary Club and am currently serving on the iBisbee Economic Development Committee for the City of Bisbee. On the state level, I have also been active, serving on the Museum Association of Arizona, Arizona Humanities Council, Arizona Women’s History Alliance, the Arizona Centennial Legacy Committee, most often serving in an executive position.

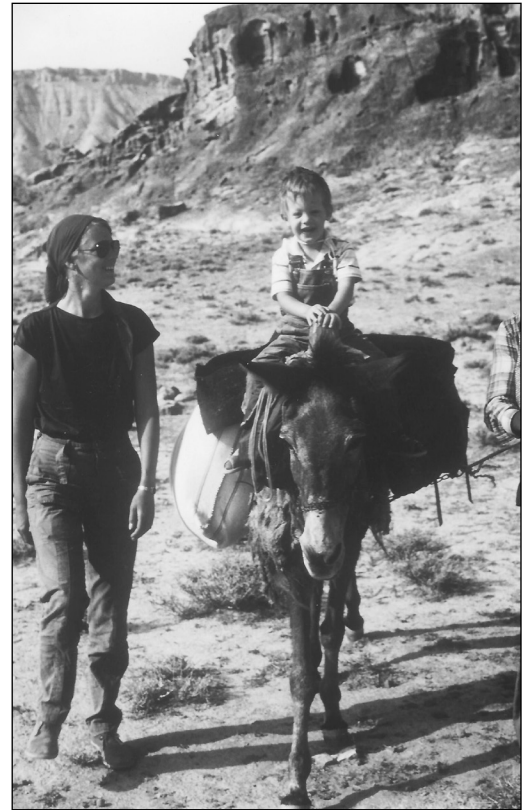
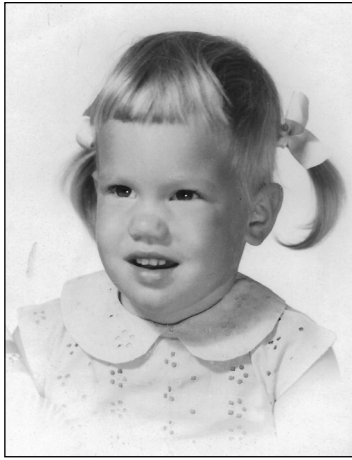
I have a son, Peter, a wonderful daughter-in-law, and two grandsons, ages four and five, and I have learned that as a 21st-century grandmother, you are fundamentally a mobile play app, whimsically turned on by simply pressing the “play” key! As much as I love my museum job, I confess that my role as a mobile play app is the job I love the most!

Carrie Gustavson

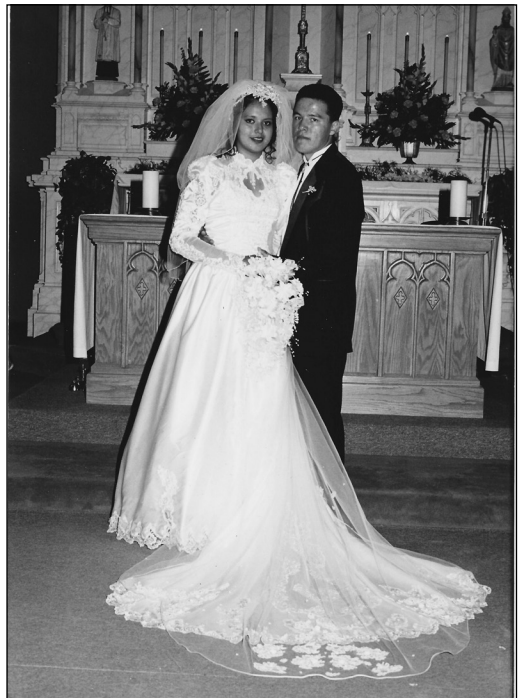
Introducing Brenda!

As my grandmother always told me, it was a very cold, snowy Bisbee morning in 1976 when I was born. She and my father walked holding each other for warmth from Galena to the Copper Queen Hospital. I tell many tourists who come into the visitor’s office... Yes, we do exist! People don’t just wake up here!

I attended Bisbee Schools, was very involved in sports, and always loved this little town. I never went off to explore the world and immerse myself in other cultures, but I have great respect for our community and am proud to be from Bisbee. I have been married for 21 years and have two smart, caring, loving daughters. I have always been a very involved mother. I volunteered in my girls’ classes, held fundraisers to buy uniforms, or to send them on their own adventures. That’s been another example of our Bisbee community stepping in to buy, donate and support what the youth of Bisbee are trying to achieve. My oldest is attending NAU in Flagstaff and my youngest is a freshman in high school. Both have a great work ethic and have grown up volunteering in our community. I enjoy making cakes, gardening, and cheering on my daughter at her sporting events. Go PUMAS! Sometimes I get carried away and you can find my husband sitting on the other side



Carrie & her son, Peter, Petra, Jordan, 1983



Brenda’s & her husband, Ramon’s, wedding photo, 1996

of the gym.

This position has giving me a way to share my love of Bisbee, and as I am referred to as the half city/ half museum employee I work with Jen Luria and Carrie Gustavson, both of whom have a great vision of where Bisbee can go while preserving its past. When I started working as the “Office Manager” I was able to fill a need for the Museum side in scheduling volunteers and calling to beg them to fill in. Bisbee also needed a centralized location where tourists could easily stop in and get directions and information about what to do once they find their way to this little gem. For the City side, I update online calendars regionally of Bisbee events. I continually add to our mailing list names and emails of info requests for people to receive our newsletter, encouraging them to visit. My Spanish has really come into play in this position. I continually translate Bisbee ads that will be placed in magazines and newspapers throughout Mexico. It is also a big relief to our Mexican tourists when I can greet them in Spanish. I really enjoy meeting people from all over, who want me to highlight Bisbee for them.

I have a great office with local art. Windows that open to this wonderful Bisbee weather, where I can hear musicians playing. And windows to close, when musicians are playing! It's the simple things make me very happy.

Brenda Morales

Introducing Amanda.

I am the Curator of Education & Collections here at the Museum and yes, it is a dream! Every day I get to say I'm surrounded by Bisbee history; whether it's an artifact I'm cataloguing, a research request I'm fulfilling by listening to our oral history, or sharing our love of Bisbee with a school tour, I am so fortunate to be able to spend my days here. As the saying goes, “Do what you love and you'll never work another day in your life.”

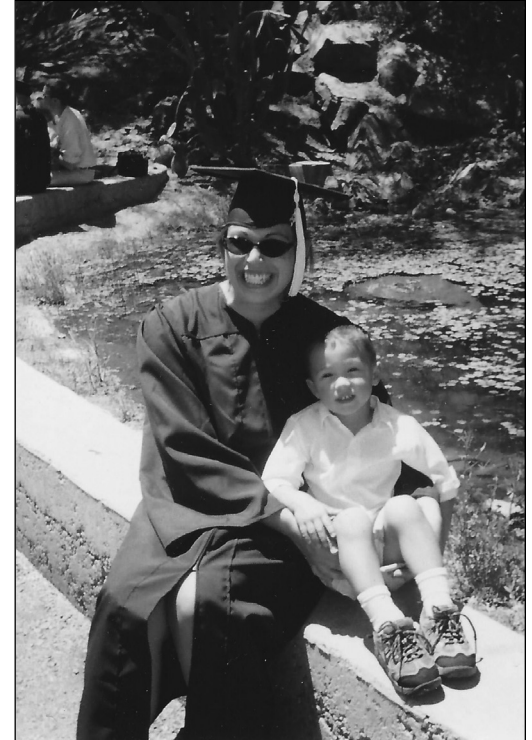


Years ago I had fallen in love with Bisbee: the history, the architecture, the people, and the progressive spirit. Although I had lived in the Phoenix area for over twenty years, I did not fall in love with Arizona history until I visited Bisbee. My studies, research, and teaching always focused on United States history and it is so exciting to see those moments in American history in Bisbee. Bisbee is a microcosm for what played out on the American stage at the turn of the twentieth century—industrialization, the rise of big business, immigration, progressive politics, nativism, etc.

Moving to Bisbee was the easiest decision I have ever made, although when we decided to move here we were taking a break from the Arizona desert and living in Port Townsend, Washington. We fell in love with a little shack on Van Dyke Street in Warren. We bought it sight unseen! We just knew it was meant to be. Now I get to say I live in the first master-planned community in Arizona and a community with the oldest continually used ballpark in the nation!

“We” is my best friend and partner Tom Hill, and our son Jonah Dylan. Tom is the secretary at Lowell School. He enjoys helping staff, students, and parents tremendously. Jonah is a Puma and will be the class of 2020. I think we need to bring the copper diplomas back! Right now he is working on the new youth media radio station, 91.3 KISJ.

Amanda Hetro



Amanda & her son, Jonah, at her graduation, 2005



Your staff hard at work!

And that's us! You have a great staff and a wonderful group of Museum volunteers, who, working together, have a lot of fun accomplishing a lot!

Here is our contact information:

carrie@bisbeemuseum.org
(520) 432-7071 ext. #3

amanda@bisbeemuseum.org
(520) 432-7071 ext. #2

brenda@bisbeemuseum.org
(520) 432-7071 ext. #1

Heritage Keeper Members

Chris & Gretchen Bachman • Dee Braman • Justice Financial • Robert Gaethje • Denise Hoyos
Jack Ladd • The Warne Foundation

**Remember us in your will & in your estate planning.
A bequest can perpetuate your annual gift!**

Let's say your annual gift to the Bisbee Mining & Historical Museum is \$500, the entry level into our Heritage Keeper membership status. A bequest to us of just \$10,000 can be endowed so that it distributes approximately \$500 each year (5% of the principal) to support our work. Even a small bequest, when endowed, can have a significant impact on funding our important programs. Ask us about the many endowment opportunities available to you and how you can create a meaningful legacy through a well-planned charitable bequest. For further information, contact Carrie Gustavson, Director, at (520) 432-7071 or by email at carrie@bisbeemuseum.org for details and references.

We would like to thank the following for their wonderful support

Alice Metz Bequest
Sylvia Iriarte & John Albert Riddle Bequest
Joy & John Timbers Bequest
Les Johnson Bequest

*Membership Renewal
Information Enclosed!*

Museum staff at Apache Nitrogen Products
(formerly Apache Powder, 2017)



Bisbee, Arizona 85603
PO Box 14



Non-profit Organization
U.S. Postage Paid
Permit No 32
Bisbee, Arizona

Membership

Insert page -1-

If this box is checked, your membership is due!

Your current membership level is listed on your mailing label.

☐

Explore History Discover Bisbee's Past Today

Yes, it's that time of the year again to renew your membership with the Bisbee Mining & Historical Museum, a Smithsonian Affiliate!

The Museum's educational mission: Discover History - Explore Bisbee's Past Today

Our vision:

- The Bisbee Mining & Historical Museum preserves and shares Bisbee's culture and heritage – past, present, and future.
- The Bisbee Mining & Historical Museum encourages visitors to recognize the similarities and differences to their own lives and to tie our shared past to their present.
- The Bisbee Mining & Historical Museum provides visitors with quality learning experiences in a fun and enjoyable setting.
- The Bisbee Mining & Historical Museum inspires visitors to reflect upon the importance of Bisbee's mining heritage in shaping our nation's story

To sustain our mission & vision, we:

Support education. The Museum is an informal educational institution supporting lifelong learning across generations through its exhibitions and programs.

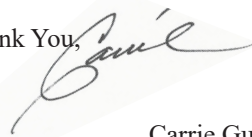
Bring history back to the forefront. The Museum keeps history relevant by offering quality, three-dimensional story telling that bring the fun back into history.

Enrich 'pride of place.' As a public history museum, the Museum promotes pride in our community and in our shared history.

We also believe in 'It's the economy, Stupid!' The Museum is a major contributor to Bisbee tourism industry, a prime driver of our local economy.

This is the mission and vision your membership supports!

Thank You,



Carrie Gustavson, Director

Membership Information All basic memberships include:

- Unlimited free admission to Bisbee Mining & Historical Museum Muheim Heritage House
- 2 Free Museum Admission Passes
- 10% discount on all purchases in the Museum Store
- Museum Newsletter
- Advance notice and preregistration on Museum events
- Members-only section of our website with its oral histories and 16-mm film archives

Individual	\$30 BASIC package
Family	\$40 BASIC package
Patron	\$75 BASIC + 2 extra Museum passes
Patron Affiliate	\$75 + Smithsonian membership
Business	\$100 + 6 Museum passes for your staff and customers

Life \$350 = No more annoying annual reminders to renew your membership + recognition name plaque displayed in Museum!

Heritage Keeper \$500 - \$2,500 annual donation
The Heritage Keeper level is an exciting opportunity to support the Museum with an annual donation by members & businesses:

- Unlimited free Museum admission or small group tours with Museum staff (reservations required)
- Use of Museum facilities for small meetings or receptions (once annually, reservations required)
- Donor recognition in the Museum Newsletter

Think of enhancing your support by upgrading your membership!

You can either pay on-line at www.bisbeemuseum.org

-or-

send a check, payable to

Bisbee Council on the Arts & Humanities (BCAH)

Bisbee Mining & Historical Museum

PO Box 14, Bisbee, Arizona 85603

-or-

Call Museum staff to use your credit card for renewal payment

by the phone

[520] 432-7071

see over

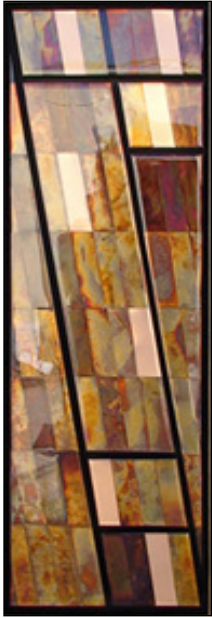
What exactly are you supporting with your membership?

Insert page -2-

Coming to a Museum near
(or perhaps not so near...) you!

The 2018 Exhibit Schedule

Copper as Art



Copper Art by
Archie Sutton

We are currently working with Bisbee copper artist Archie Sutton to plan and to install a small exhibit in the West Gallery with a different twist to our copper story. Archie's copper work is beautiful and will bring a brand new dimension to our mining museum, displaying this metal as art! We are planning this exhibit for Winter 2017 through the winter months of 2018.

Minerals & Me

Recently PBS's NOVA program: Life's Rocky Start (Season 43, Episode 2) began with the enthusiastic "They're dazzling, priceless, at times even glowing. How can we not fall in love with rocks and minerals? The colors, the shapes, and they're the building blocks of modern civilization. We wouldn't have televisions, we wouldn't have automobiles, we wouldn't have buildings without the mineral riches that we have!"



Malachite specimen,
Smithsonian Institution

The proposed exhibit, *Mineralogy & Me*, is a dual case exhibition that combines both the classic definitions and the educational qualities of minerals: the classic definitions focusing in on What's in a Name?; the educational component focusing in on Did You Know?

Mineralogy is defined as "the scientific study of minerals." For many of us, simply the term 'science' is the big bogymen standing outside our ability to comprehend and certainly assuming a position outside the realm of our everyday lives. Countering this, STEM educational programming brings science into our everyday lives. Science is everywhere in the world around us.

Mineralogy is everywhere in the world around us. Mineralogy and science are fundamental to Bisbee's existence and history - *Minerals & Me* tells this story. Designed to rotate its focus themes and specimens displayed annually, this story is given depth as it can be told from a multitude of perspectives.

Pending successful grant funding, look for *Minerals & Me* in the Spring of 2018.

Water/Ways



Smithsonian/ Museums on Main Street Water/ways travelling exhibit

"Water is life. It forms our world and our lives. It is crucial in determining where we live and work and what we eat and drink. It is an essential biological and natural resource that people struggle to access and control. Water shapes human culture - our ways of life." Thus begins *Water/Ways* exhibit text.

Today's Bisbee is very ecologically aware, especially with its mining history as a backdrop to environmental stewardship concerns of a socially conscious community. In so many ways, water has shaped our history and continues to shape our future. Water is a major player in our community story. Thus our decision to host *Water/Ways*.

The Water Wise Program, University of Arizona, Cochise County Cooperative Extension is our partner with *Water/Ways* and will work with us to offer complementing programs focusing on water conservation on personal, household, business, and community levels as well as a film festival focused on local and regional water management (supply and demand), scarcity, and the economics of water for sale.

In June & July 2018, we are bringing the Smithsonian Institution and Museums on Main Street *Water/Ways* travelling exhibit to the Museum. We are planning extensive programming to complement this exhibit and will share this with you in our next newsletter.



Smithsonian



Arizona State
University

