



Bisbee Mining & Historical Museum, *in association with the Smithsonian Institution*

Issue #80, Summer/Fall 2018

Newsletter

17,000 *seventeen thousand* **17,000**
one-seven-zero-zero-zero
Please note how many zeros there are!

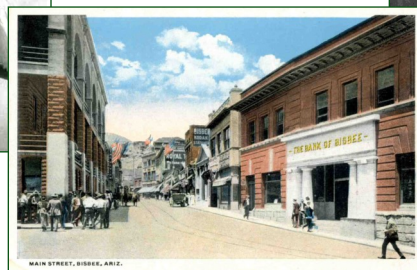
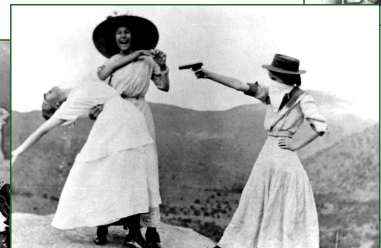
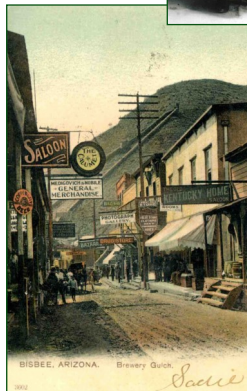
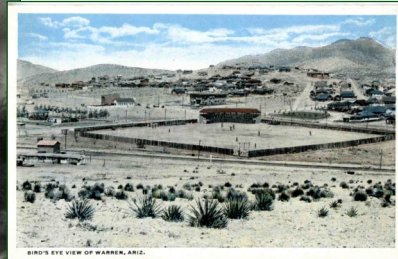
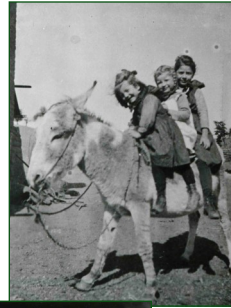
**That's how many
of our archival photographs are
now available on our website
... for your perusing pleasure!!!!**

That's right! 17,000 of the wonderful images in our archival collections are now available at www.bisbeemuseum.org!

The largest component of the Museum's collections are its photographs. With over 20,000 archival images covering a period from its founding in 1880 to today (remember history doesn't stop at the end of the day; today's decisions are tomorrow's history!), the photograph collection brings to life the shadows of Bisbee's past. The visual stories reflected in the images tells why Bisbee came about, what life was like throughout the centuries, who the residents were, where they came from, and what they did for work and entertainment in their everyday lives.

Through the eyes of the many photographers who took these photographs, you'll see how the people of that day reacted to the social issues of the time, and how their responses helped shape the city and the nation.

You'll see what it was like working underground, the dirt and darkness, and how technology made work more productive and safer.





You'll be able to trace how transportation—the introduction of trains, automobiles, trolleys, and buses—impacted how Bisbee expanded into its suburban neighborhoods.

You can explore the 'business' of Bisbee, be its copper industry or the many stores and services one can find in cities and urban centers today.

You'll be able to follow the changing fashion trends and how residential living and its commercial support structure changed over time. You'll see the wonderful parades, celebrations, and social amenities—the theaters, movie houses, clubs, and meeting places available to this thriving urban 'outpost' on the frontier.

You'll begin to understand the times that your parents and grandparents recall so fondly, and so harshly.

You'll also begin to learn about what was going on around Bisbee—the Apache, the rich ranching traditions in the San Pedro and Sulphur Springs valleys, and the Mexican Revolution of the early 20th century.

I'm a true believer that history is made by all of us, for all of us. History isn't made by the authors who write books about it, history is made by our collective decisions based on our understanding of who we are. Perhaps by better understanding the decisions that made us who we are today we will make better decisions as our present becomes our past and we move into our shared future. Thus our priority on getting as much information captured in our collections out for your use. The Museum's archival photograph collection offers a truly fun and enlightening trip into our community's past.

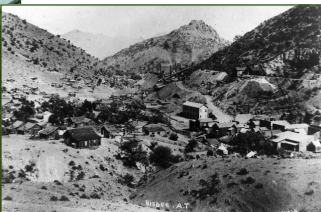
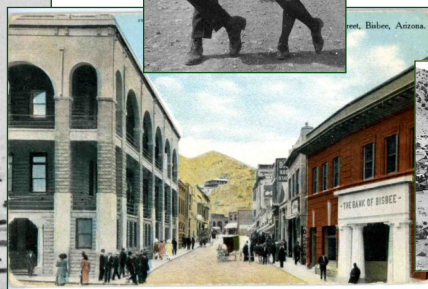
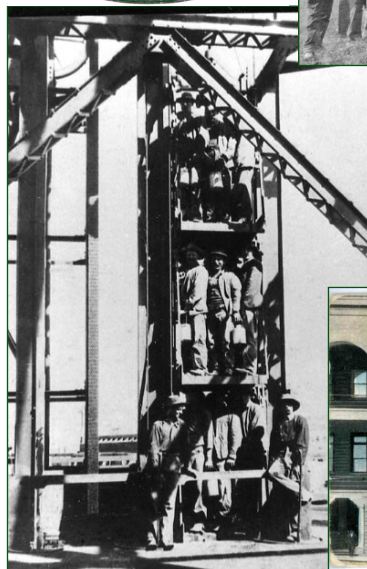
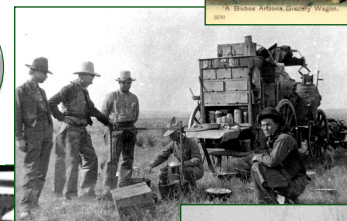
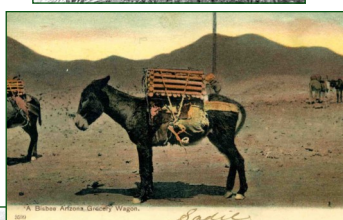
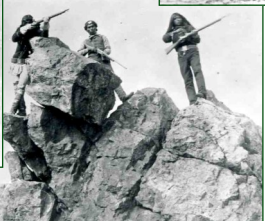
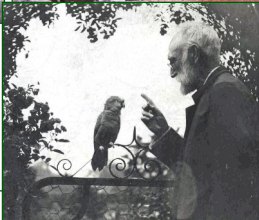
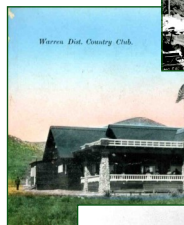
So how does this online photo library work?

All images come with their descriptions as we have them in our collections catalogue. To look through the collection, click on 'Photo Archive' on the site menu, then type in your desired search term. Click on 'Find Terms' and assistance is offered in refining your search parameters in the 'Search Term' or 'Subject' boxes. You also have the option of adding to your search by clicking on the 'Descriptive Field' button; all the words in the descriptive fields will also be searched.

The colorized postcards are not yet accessible on our website, but we are working on that... stay tuned!

So what's next? We have a research docent (who upon retiring discovered the exquisite fun of history) working with our Collections Curator on our blueprint and map collections. Our collections have about 400 blueprints of Bisbee buildings and maps of Bisbee and the surrounding areas. Currently, this collection has been organized in our vault storage and research is now done to enhance the catalogue descriptive field to include information from the National Register of Historic Sites register (corrected!) and any information from contemporary newspaper accounts. Once the research is completed, we will be seeking grant funding to digitize the collection and get that on our website.

Finally, with our penchant to come up with unusual museum adventures, we've got one now! In our last newsletter, Denise



Lundin, our former Board President, challenged our membership to help raise funds to complete the *Bisbee Daily Review* newspaper collection that we have on microfilm in our Shattuck Memorial Research Library. Newspaper accounts are a wonderful, and often fun, research source that provide first-hand accounts of issues and events in accordance with the thinking of the day.

Thanks to our members, we raised the necessary funds in short order. Then Arizona Department of Libraries, Archives, and Public Records informed us that the Secretary of State stopped their microfilm copying service the week before we submitted our order. Thus begins the multi-episode 'Adventures in Shrinking Newspapers.' On the advice of the Director of Arizona Archives and Records Management, we contacted Doculynx, a copying service in Phoenix. Having learned to expect the unexpected, we weren't really all that surprised when the price of this service doubled! Again, thanks to our membership, we were able to raise the additional funds (our total now at \$2,100 + \$500 additional funds for a cushion for any problems that, quite frankly, I'm again anticipating!). Then I got a call from the Director of the State Library, who works for the Director of Arizona Archives and Records Management and with whom I have also worked with for many years, that they didn't have the protocols in place to send their microfilm out for copying!

As our adventure continues; however, I am assured of a positive outcome, but just a little later than we had anticipated! It will take four to six months for State Libraries to figure out what they're doing and it may take more time since they don't want to release all 70 microfilm rolls we requested at one time. So... stay tuned for our next episode of 'Adventures in Shrinking Newspapers!'

To all our members who believe in the importance of having the complete set of newspapers on microfilm, THANK YOU Chris & Gretchen Bachman; Gary Dillard; Earl Doane; Ann English; Joan Hansen; Denise Lundin; Dan Pollak, Marie Pinto, Gaethje... Chris man again, Joan again!



Lois Wohlhart, Bob & Gretchen Bach-Denise again, and

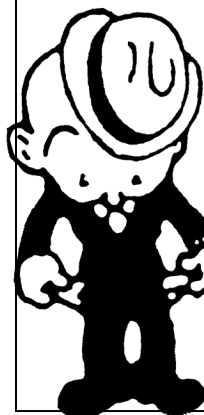
Carrie Gustavson, Director

History with a Twist

Annual Dinner & Silent Auction

October 13, 2018

See insert in this newsletter



Our Annual Dinner & Silent Auction comes with a new twist! Not only will Arizona's Hip Historian entertain us with his weird & wacky insights into our history, but we are introducing a fun new twist of our own: the **Wine Wall**. Your board members, staff, and friends are donating bottles of their favorite wine for our wine lottery! Bring a \$20-dollar bill and select a numbered cork, then take your chances on which wine you will win!

Archival Images

Page #1 L to R, Top to Bottom

Winnie Brooks & friends riding a burro, c. 1907

"Water Wagons" in front of the Cuban Store, colorized postcard, date unknown

Elsie May Johnson, Irwin Studio, date unknown

Bird's eye view of Warren, colorized postcard, date unknown

Underground miner Bill Anderson "Malachite Bill," date unknown

Brewery Gulch, colorized postcard, 1904

Elsie May Johnson as a child, holding kitten and pigeon, date unknown

Robbery reenactment, Emily Wilson Trischkas holding the 'fainting' girl, Mule Mountains, 1911

Gertrude and possibly Iola and Iona Branson pushing Studebaker, Safford, AZ, 1915

Girls on motorcycle, 1919

Erie Street, Lowell, colorized postcard, date unknown

Unidentified men sitting on paper moon for novelty photograph, c. 1915

Main Street, Bisbee, colorized postcard, c. 1910

Miner, Cole Shaft, c. 1960

Page #1 L to R, Top to Bottom

Bisbee Deportation, July 12, 1917, round-up fronting Bisbee Post Office

Calumet & Arizona Mining Co. General Office Building (City Hall), Warren, date unknown

P & H shovel loading 35 ton Dart truck, Lavender Pit, c. early 1950s

Copper Queen Consolidated Mining Co., General Office Building (Museum), c. 1903

Dr. James S. Douglas, date unknown

Warren Country Club, colorized postcard, Cooley photographer, date unknown

Women golfers at the Warren Country Club, date unknown

Golfing a dry stream bed near Warren Country Club, c. 1910

Joe Striker, Irwin Studio, date unknown

Soldiers of the 4th Cavalry in Bisbee with the Apache Kid (standing), 1884

Unidentified Solada (female soldier) posing in Naco, Sonora during the Mexican Revolution, 1913

Three Apache scouts, C.S. Fly photographer, date unknown

"Bisbee Grocery Wagon," colorized postcard, date unknown

Pink Murry, Foreman OR Ranch, Huachuca Mountains in background, 1909

Chuck Wagon, Cochise County, date unknown

Josefa, Mercedes, & Donaciano Casillas, Irwin Studios, 1916

Miners in cage at Campbell Shaft, 1904

Man and woman posing for camera, possibly members of the Blum family, 1919

Main Street, Bisbee, colorized postcard, c. 1910

Bisbee, Arizona Territory, looking east, Sacramento Hill in background, Hildreth photographer, 1888

Heritage Keeper Members

Chris & Gretchen Bachman • Dee Braman • Justice Financial • Bob Klein & Jeffrey Trujillo • Jack Ladd
The Warne Foundation

**Remember us in your will & in your estate planning.
A bequest can perpetuate your annual gift!**

Let's say your annual gift to the Bisbee Mining & Historical Museum is \$500, the entry level into our Heritage Keeper membership status. A bequest to us of just \$10,000 can be endowed so that it distributes approximately \$500 each year (5% of the principal) to support our work. Even a small bequest, when endowed, can have a significant impact on funding our important programs. Ask us about the many endowment opportunities available to you and how you can create a meaningful legacy through a well-planned charitable bequest. For further information, contact Carrie Gustavson, Director, at (520) 432-7071 #3 or by email at carrie@bisbeemuseum.org for details and references.

We would like to thank the following for their wonderful support

**Les Johnson Bequest
Alice Metz Bequest
Sylvia Iriarte & John Albert Riddle Bequest
Renette Gerdes-Saba Bequest
Joy & John Timbers Bequest**



**P.O. Box 14
Bisbee, Arizona 85603
www.bisbeemuseum.org**

Non-profit Organization
U.S. Postage Paid
Permit N° 32
Bisbee, Arizona



**Including an invitation to the
Museum's Annual Fundraising
Dinner with Arizona's Hip
Historian, Marshall Shore
October 13, 2018**

History with a Twist

You are invited to...



**Bisbee Council on the Arts & Humanities
Annual Fundraising Dinner & Silent Auction**

Saturday, October 13, 2018

Bisbee Masonic Lodge

5:30 — 9:00 pm

**BISBEE
BINGO
BONANZA**

Marshall Shore — Hip Historian + Bisbee BINGO Bonanza

Join us for an evening of fun, great food, and friends topped off with an engaging presentation by Marshall Shore, Arizona's Hip Historian!

Marshall's passion is uncovering the weird, the wonderful, and the obscure treasures from our past: the semi-forgotten people, places, and events that have made us who we are today. Marshall uses storytelling magic, old photographs, ephemera, and artifacts to bring our state's heritage to life in entertaining and educational presentations. Get ready for a bit of Bisbee fun... *historically speaking!*

Program



5:30

Social Hour & Silent Auction (*bar included in ticket price*)

Scott M. Davis, Guitarist

6:30

Dinner (*catered by High Desert Market & Café*)

Grilled flank steak with chimichurri salsa & roasted potatoes

Grilled salmon with dill cream sauce & rice

Green Beans

Dessert (*catered by Calumet & Arizona Guest House*)

Orange Pound Cake

7:15

Marshall Shore, the Hip Historian

Bisbee BINGO Bonanza

8:15

Silent Auction closes

\$55 per Person

\$50 *for Museum Volunteers*

\$325 *Reserved Table of 6*



Make checks payable to

*Bisbee Council on the Arts & Humanities
PO Box 14, Bisbee, Arizona 85603*

*To pay by credit/debit card, contact staff at
[520] 432-7071 #1 for Brenda & #3 for Carrie*

Reservations required (by October 5th)